

Timor Leste

Food Security Bulletin

Issue No. 1 July-September 2012

Page 1

Content

Food security Situation Summary.....	1
Overall production and food availability.....	2
Crop production	
Agro-meteorology	
Government support programs	
Food balance and National Food Security	
Food prices and market supply.....	5
Household food security.....	7
Vulnerability, coping mechanisms and government response	
Nutrition and health.....	8

Timor Leste Crop Calendar

In normal years, coinciding with the rainy season, the agricultural cycle in Timor Leste begins in November with land preparation and planting of maize, followed by nursery preparation and transplanting of rice in December/January. Maize is harvested in April and wet season rice around May/June. In southern areas, where there is a second rainy season and in areas with some supplementary irrigation it is possible to grow a second crop of maize or rice.

Crops	J	F	M	A	M	J	J	A	S	O	N	D
Rice (main season)												
Maize (main season)												
Rice (second season)												
Maize (second season)												
	lean period										lean period	
	Sowing	Growing	Harvest									

Source: MAF

FOOD SECURITY SITUATION SUMMARY

Cereal production, consisting mainly of rice and maize, this year projected at 265, 481 tonnes, 140 percent higher than the poor harvest of the previous cropping year and 43 percent higher than an average of the past three years. This high estimate attributed to the increase in the cultivated area for the paddy rice of 20,029 hectares and some increase in yield from 3.25 to 3.4 tonnes per hectare. Use of improved seeds and fertilizers from the government's Fila Rai Gratuitu program and from Non Governmental Organizations, favourable weather during the entire main season as well as emphasis on seed transplanting and weeding have significantly contributed for the improved yield of the main season harvest.. However, for the current marketing year (April 2012/March 2013) 26, 341 tonnes deficit of rice and 33,609 tonnes maize surplus are estimated. The rice deficit could be covered by other crops/food or by imports.

Across the country food supply was reported normal during the past lean season (November-February) and during the second quarter. The average price of rice (70 cents) is showing a normal seasonal behaviour at local level, with an

increase in January/February (the highest seasonal peak) and a slight decline during the following months. Maize prices dipped in March (during the harvest time) but rose towards the end of the maize harvest period (April) and the succeeding months reflecting the relative food insufficiency in some districts following the low performance in 2011, unsatisfied demand and a need to restore stocks.

In spite of the national level favourable production situation described above, there have been some areas where the attack of pests has caused considerable damage to the crops with the total damage area estimated at 5,612.02 hectares.

The districts that are mostly affected are Ainaro, Bobonaro, Manatuto and Oecusse. There are also districts that have higher structural food deficit that could be the most vulnerable districts in the event of environmental or economic crisis. These districts are: Liquisa, Ermera, Aileu, Ainaro, Manufahi and off-grid areas of Dili.

The nutritional status of children under five years of age reveals some improvement. The Health Monitoring and Information System (H-MIS) revealed the reduction of prevalence of underweight condition (children with low weight for their age) during the second quarter.

The Timor Leste Food Security Bulletin (FSB) is a product of the EU and FAO supported project on establishing a sustainable National Information and Early Warning System (NIEWS) on Food Security in Timor Leste. The FSB aims of reporting and providing information on national and household food security situation in a quarterly basis. This is a MAF led innovation of ensuring the timely delivery of information to decision makers and wider stakeholders on the general overview of the food security situation of the country as an early warning to mitigate the serious impact of food shortages and hunger. This third quarter issue provides the final production estimate of the main season harvest for maize and rice as well as an early estimate of the second season production. It also includes market information and price data for the main food products.

This product is funded by the European Union. The views expressed in this publication do not necessarily reflect the views of the European Commission.



OVERALL PRODUCTION AND FOOD AVAILABILITY

Crop production

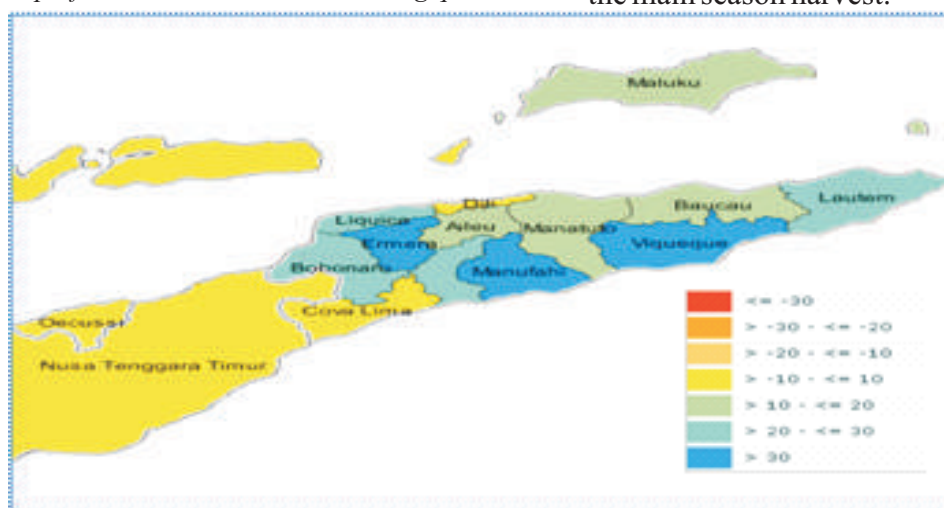
Good agro-meteorological conditions (see below) contributed to high yields and good harvest in the first cropping season. Yields are estimated to be significantly higher during the main season harvest (3.4t/ha for rice and 2.2t/ha for maize) than in 2011 (2.76 t/ha for maize and 1.41 t/ha for rice). A crop assessment was carried out for rice in August, which allowed updating the area planted during the first season at 35,597 ha (out of the total area targeted for 2011/12 production of 44,900 ha.) and fine tuned the yield and production calculations. The result from the crop assessment pointed out that the main/high rice producing

Food Commodities	2009-2011 average production (tonnes)	Total area under cultivation 2012, main plus second season (ha)	Main season production (tonnes)	Second season production, forecast (tonnes)	Total year 2012 production (tonnes)	% production change as of 2012/average 3 years
Rice (paddy)	111	44,9	123,3	30,306	153,606	38%
Maize	105	84,9	79,5	76,533	156,033	49%

districts are Baucau, Bobonaro, Covalima and Manatuto. These districts have potential rice surplus. While for maize, the main producing districts are Ainaro, Lautem, Oecusse and Viqueque. These districts are accounted for 61% rice and 57% maize production during the main season. No double cropping using the same farm is common in Timor Leste, therefore most of the area used for the second cropping are those not utilised during the main season.

Both rice and maize have increased the cultivated area during the main season. The cultivated area for both rice and maize this year (April 2011-March 2012) was 10% higher than the previous year. Table 1 below shows a comparison of production performances from 2009 to 2012 main season including actual second season projected production.

Figure 1: Rainfall performance in Timor Leste during quarter 2



Source: MARS Viewer of JRC-EC

MAF is promoting the use of the Integrated Crop Management (ICM) and the Sustainable Rice Intensification (SRI) technologies to increase production in conjunction to the *Fila Rai Gratiutu* program. It is estimated that ICM and SRI cover about 60% of the total area cultivated for rice. The *Fila Rai Gratiutu* program involves the distribution of good quality seeds, free land preparation (free ploughing) and the provision of extension services. These contributed to the good cereal production results of the main season.

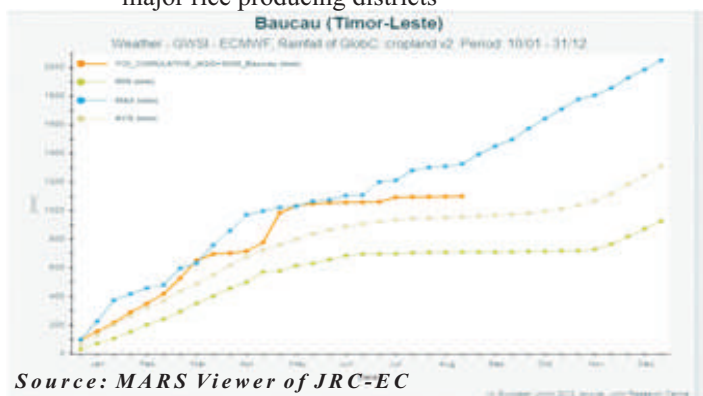
Post harvest losses estimated from 15-20% for both rice and maize remained the biggest concern of the Timor Leste government in meeting the annual national food requirement. Up to now, the milling recovery for paddy to rice still 60% which is 6% lower than the regional milling recovery rate in the region used by FAO. In fact, an investment programme in MAF is under way to endow farmers nationwide with storage capacity in their farms.

Agro-meteorology

The 2012 rice cropping season continued to experience favourable weather conditions. Rainfall was generally above long term average in most of the districts. The cumulative rainfall activity showed very good conditions existed in most of the rice producing districts of Baucau, Viqueque, Manatuto, Covalima, Bobonaro and Ainaro. Low levels of rainfall were recorded in July and August, when most of the crops were all matured and to be harvested. In fact this low rainfall level at the end of planting season was supportive facilitated efficient harvesting and was considered normal as transiting to the dry season. This rainfall data was derived from the European Center of Medium Weather Forecast (ECMWF) model.

The Normalized Difference Vegetation Index (NDVI) which is an indicator of green biomass temporal profiles were also near or above the long term average which confirms good yield and production performances during the main season harvest.

Figure 2: Rainfall performance of Baucau District, one of the major rice producing districts



Source: MARS Viewer of JRC-EC

Figure 4: Rainfall performance of Viqueque District, one of the major rice producing districts

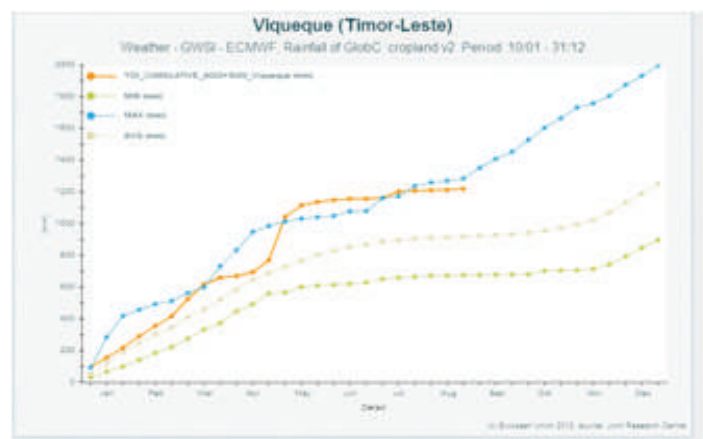
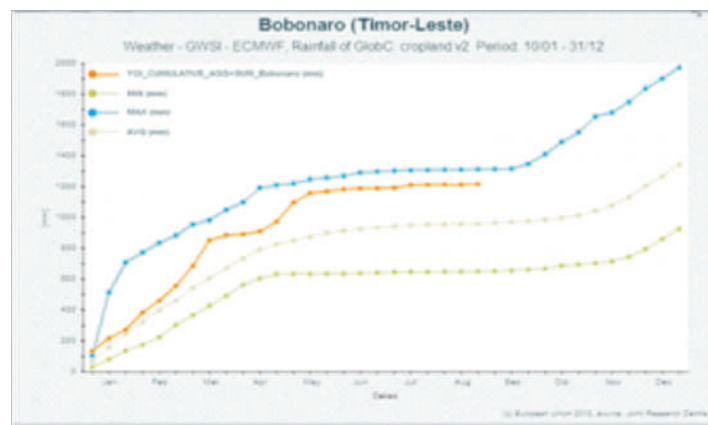
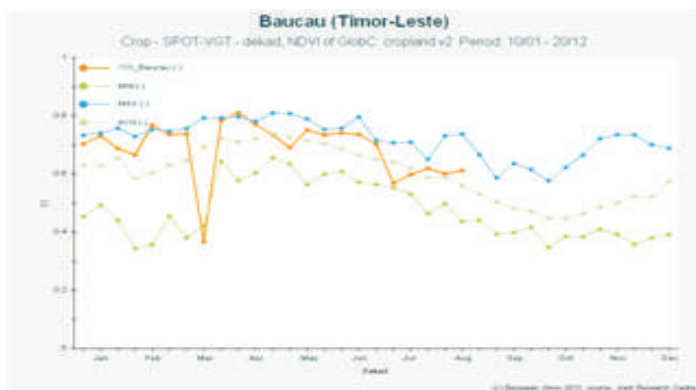


Figure 5: Rainfall performance of Bobonaro District one of the major rice producing districts



Source: MARS Viewer of JRC-EC

Figure 6: NDVI performance during the main season of Baucau District one of the major rice producing districts



Source: MARS Viewer of JRC-EC

Figure 3: Rainfall performance of Manatuto District one of the major rice producing districts



Figure 7: NDVI performance during the main season of Viqueque District one of the major rice producing districts

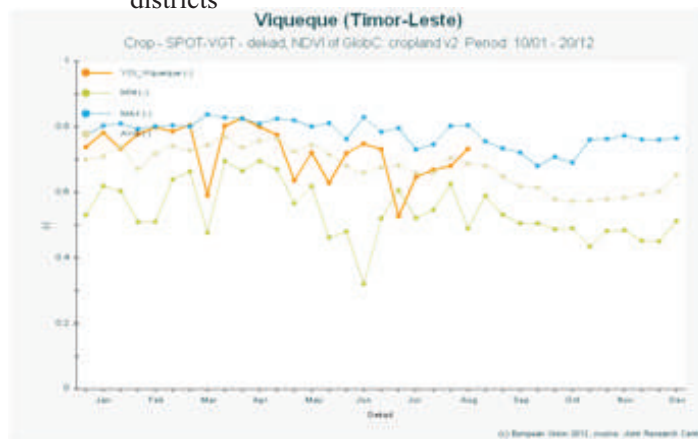
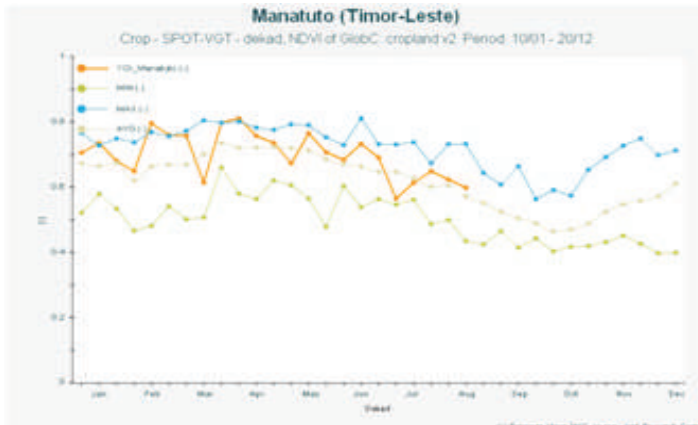
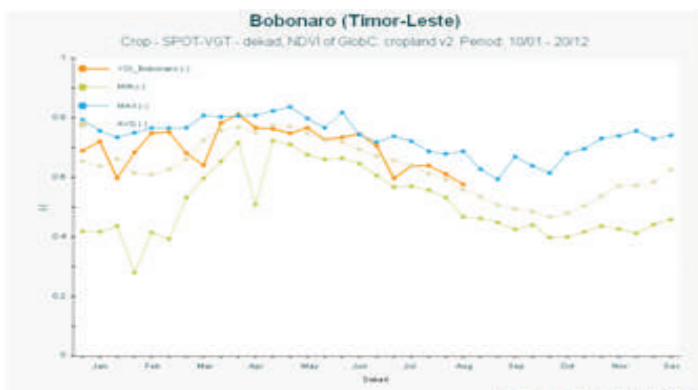


Figure 8: NDVI performance during the main season of Manatuto District one of the major rice producing districts



Source: MARS Viewer of JRC-EC

Figure 9: NDVI performance during the main season of Bobonaro District one of the major rice producing districts



Source: MARS Viewer of JRC-EC

Government support programs

The Suco Level Food Security Monitoring System (SLMS) reported that during the first cropping season many farmers received most of their seeds from the government (38%) along with pesticides (26%) and fertilizers (22%). Some farmers claimed (34%) that they purchased their fertilizer while 31% produced their pesticides. NGOs were reportedly distributed pesticides,

fertilizers and seeds to some farmers in specific areas for certain proportion. Through the *Fila Rai Gratiutu* program of MAF the **315 units big tractor ploughed a total area of 5,091 hectares while the 591 units hand tractor ploughed a total of 6,289 hectares** during the first cropping season.

Food balance and national food security

Table 2 below shows information on the percentage of farmers receiving inputs from the government from January to June.

Table 2: Percentage of farmers who received agricultural inputs from the Government

District	January			February			March			April			May			June		
	Pesticide	Fertilizer	Seeds	Pesticide	Fertilizer	Seeds	Pesticide	Fertilizer	Seeds	Pesticide	Fertilizer	Seeds	Pesticide	Fertilizer	Seeds	Pesticide	Fertilizer	Seeds
Aileu		45	75		45			75			80			62			100	
Ainaro		60			40	100		60			60	80		58			50	90
Baucau	70	25	40	60	15	40	70	25	60	80	25	30	85	25	50	70	18	35
Bobonaro	90	30	55	80	20	50	85	30	70		30	40		40	85		38	65
Covalima					40	100		45			50	70		65			62	
Dili																		
Ermera		40	65	65	18	45	90	30	75		35	50		40	80		30	60
Lautem		58	95		50			55			50	65		45	95		35	65
Liquica		70			42			75			85						60	
Manatuto		80			55			50			50	65		60			40	75
Manufahi		60			38	90		70						85			60	
Oecusse					50			75			70	90		70			60	
Viqueque					30	75		45			70	90		50	100		30	60

Table 3 below presents Timor Leste's food balance sheet that includes food availability, food utilization (consumption requirement) and food uses requirement as well as the post harvest losses. The food balance sheet shows the deficit and surplus of cereals which government immediate actions to ensure stable food supply and food availability for every households especially families living in areas most vulnerable to food insecurity.

Table 3: Food balance sheet (April 2012 to March 2013 marketing year)

	Rice 1/	Maize
Total availability from domestic sources	109,383	156,099
Opening stocks 2/	17,222	
Production from main season	73,977	79,566
Estimated production from second season	18,184	76,533
Total utilization	135,724	122,49
Food use 3/	113,039	71,449
Seed requirement 5/	808	3,821
Feed use 7/		16
Post harvest losses 6/	21,877	31,22
Deficit/Surplus	-26,341	33,609
Required imports/to be covered by other crops/food	-26,341	

1/ Milling rate of paddy to rice is estimated at 60 percent
2/ Only government stocks.
3/ Based on 106 kg per year/per person of rice consumption and 67 kg per year/person of maize and a population of 1,118,610 in 2012, according to census and a 2.41% increase indicated by the Statistics Office.
4/ It may include contingency stocks.
5/ According to the Directorate of Agriculture and Horticulture (DAH) of MAF, standard use of seed for: rice 25-35 kg/ha, maize 40-50 kg/ha.
6/ DAH/MAF estimates 15-20% post harvest losses in both rice and maize.
7/ There is no information available on the use of grains to feed animals. However, it is known that the 60% extraction rate of maize already takes into account a 6% that remains in the husk and is given to animals. Maize, in turn is extensively used as feeding. Only chicken feeding is used for this calculation, on the basis of MAF's standard consumption rate.

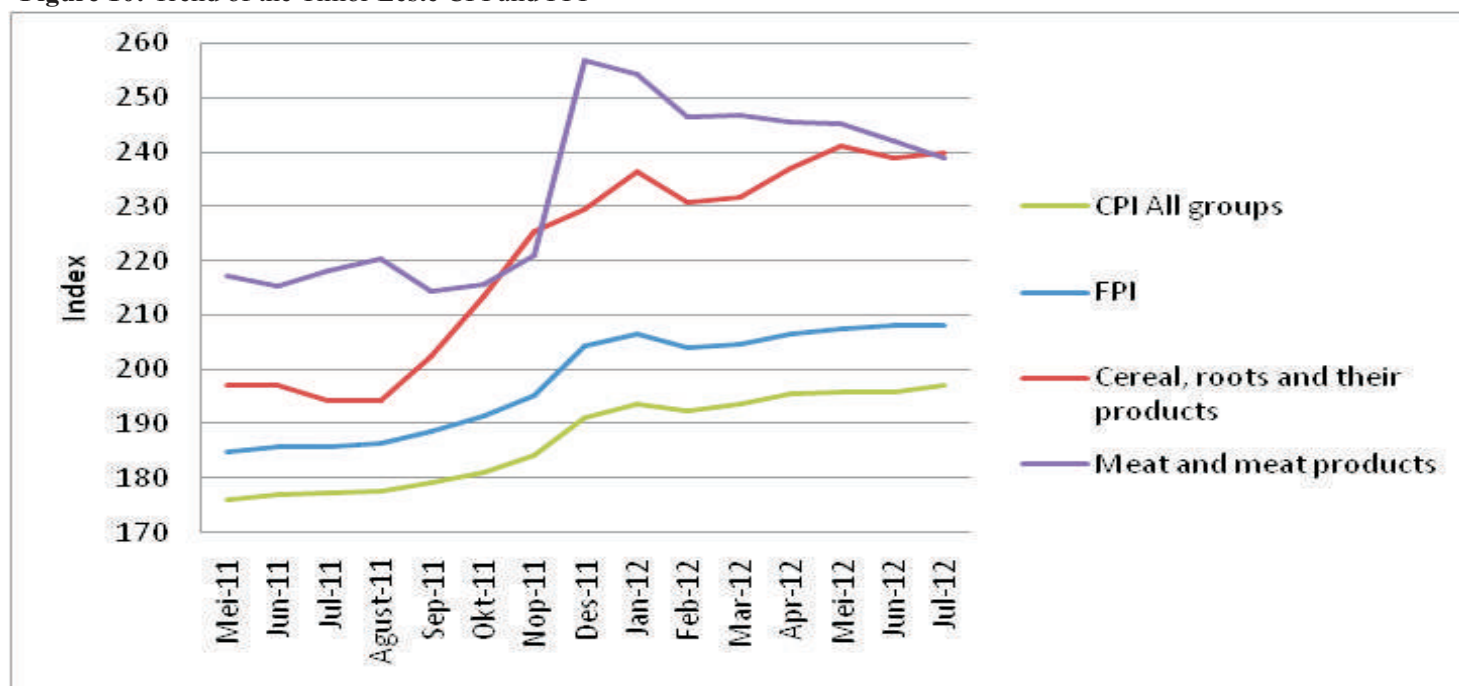
¹ The July to September data was not yet released by the Inter-ministerial Food and Nutrition Security Task Force

FOOD PRICES AND MARKET SUPPLY

The scenario presented above suggests that for 2012 Timor Leste is in deficit of rice (26,341 tonnes). This can be covered by other crops/food such as cassava, taro and sweet potato or through imports. On the other hand, the maize surplus is quite high (35,609 tonnes) which will cover the rice deficits and allow for stocks.

The Consumer Price Index (CPI) year rolling July 2011 to July 2012 is 11.1% and compared to previous year rolling the CPI decreased by 2%. Specifically the Food Price Index (FPI) reached to 208 points. The FPI measures the cost of the food items included in the general CPI's consumption basket. In July FPI decreased by 0.3% month on month as well as decreased by 1.9% year on year.

Figure 10: Trend of the Timor Leste CPI and FPI



Source: National Directorate for Statistics (DNE)

Figure 10 shows that the price index of “cereals, roots and their products” (included in the FPI) had a steady increase between August and January, this in fact covered the lean period. The cereal price index in the CPI includes bread and other processed products in addition to basic maize and rice; therefore, it is possible that prices of other food products in this category have gone up consistent with the general inflation. On the other hand the meat price index had a strong increase in December but decreased in the following months.

At the local level (information from the MAF's Suco Level Food Security Monitoring System (SLSMS) the average price of rice and maize in 70 sucos (these are the sucos that has complete data since the roll out of the

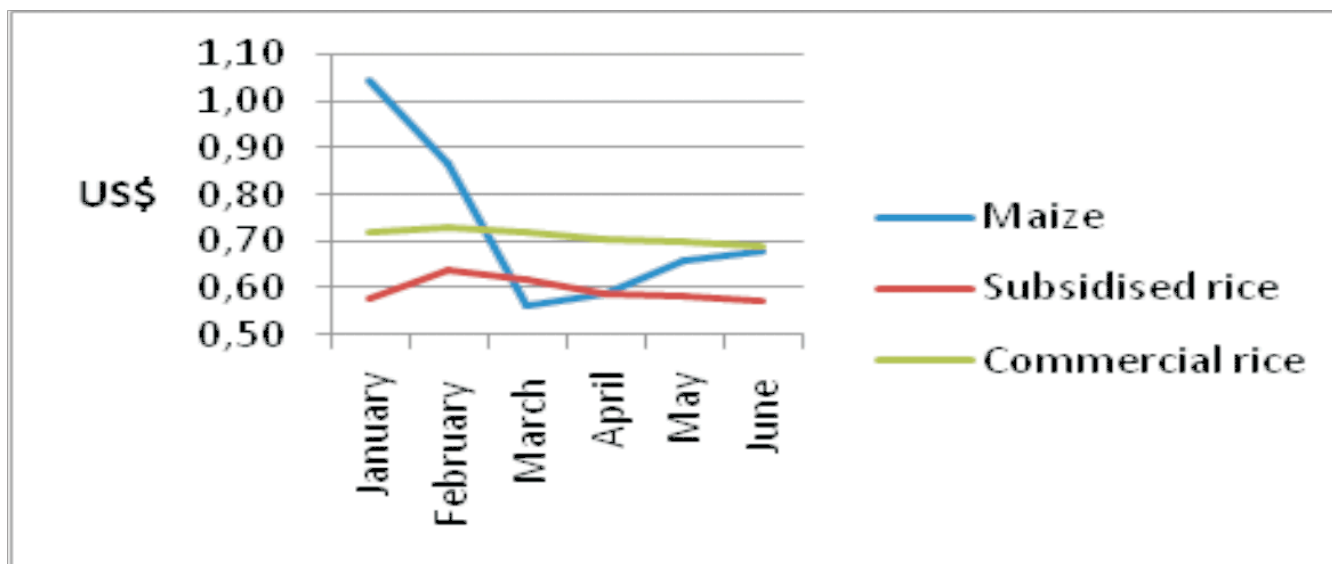
SLMS in November 2011) increased in January and February in fact the price for maize peaked in January with an average of \$1.05/kg.

However, Maize price dropped to \$.055/kg during the start of the main season harvest in March and increased back in May and June when the paddy was about to be harvested. It is expected that with rice deficits the maize price will continue to increase particularly in low producing areas like the districts of Liquisa, Ermera, Aileu, Ainaro, Manufahi and off-grid areas of Dili. Furthermore, the subsidised rice was sold at prices above the government fixed price (\$ 12 per 25 kg sack or US\$ 0.48/kg) that slightly declined during the main harvest period (Figure 11).

¹ Collected and reported by the Ministry of Finance National Statistic Directorate (DNE)

² The CPI data for August and September were not yet available at the time of the publication

Figure 11 : Average consumer prices in 70 Sucos



Source: Suco Level Food Security Monitoring System (SLMS)

The price dispersion among districts and villages (sucos) in any single moment is significant as can be observed in Figure 12 and 14 below. The villages

(sucos) presented here were randomly chosen among the villages (sucos) that have complete market price information to illustrate the trend price change in the villages from January to June.

Figure 12 : Trend of Rice price by Suco

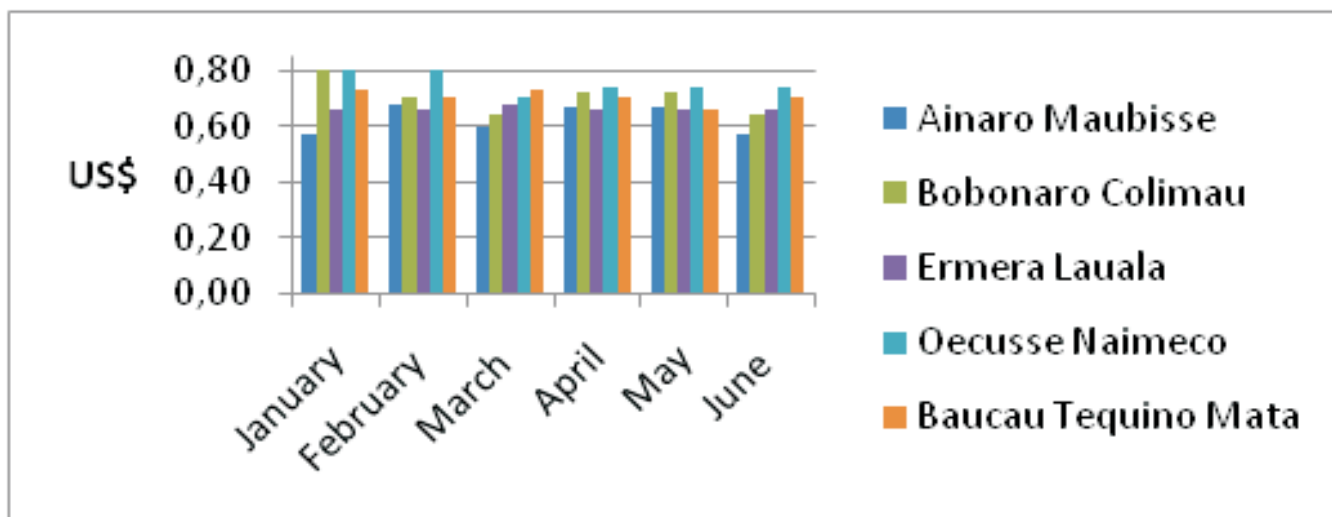
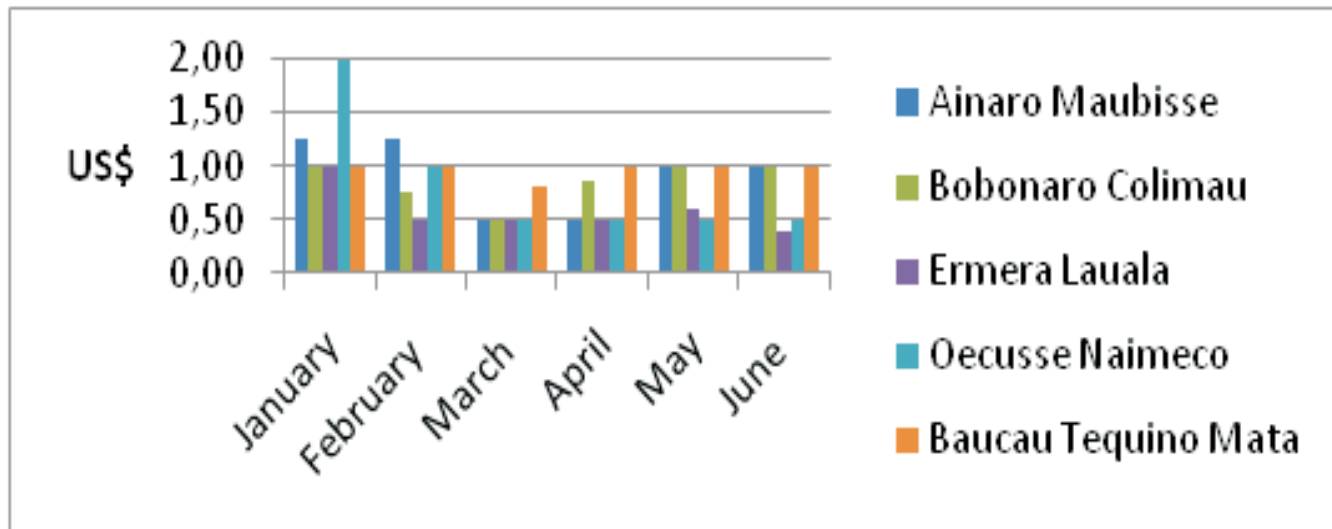


Figure 13: Trend of Maize price by Suco



³The CPI data for August and September were not yet available at the time of the publication

All in all, the food supply situation across the country has been reported normal during the past lean season. The combined private sector and government rice importation from January to September totalled to 15,161 tonnes with

concentration in the month of March and June. Government subsidized price rice was distributed down to the districts that most likely accessible to rural families.

HOUSEHOLD FOOD SECURITY

Vulnerability, coping mechanisms and government response

At the national level food are mostly available and accessible particularly cereals from January to September. However, the monthly report from the SLMS claimed that food is less available and less accessible (price more than the government fixed price) in the upland and remotely located villages. Table 3 shows that nine out of

thirteen districts have high rice deficits, while Table 4 shows the four districts that have deficits on maize (in red colour). These districts with structural production deficits are most likely vulnerable to food insecurity, although root crops such as sweet potato, cassava and taro and other nutritious vegetables such as pumpkin, moringa, cassava leaves and papaya leaves are also available in these areas that can cover up the deficits.

Table 3 : Potential Rice Surplus and Deficits, per District

District	Main Cropping Production (tonnes)	Milled rice Equivalent from main season (tonnes)	Total Population as 2010 census	Total Rice requirement (106 kg/person/year) (tonnes)	Potential Surplus and Deficit ^[1] (tonnes)
Aileu	1,034	620	44,325	4,698	-4,078
Ainaro	9,623	5,774	59,175	6,273	-499
Baucau	40,286	24,172	111,694	11,84	12,332
Bobonaro	11,856	7,114	92,049	9,757	-2,644
Covalima	10,719	6,431	59,455	6,302	129
Dili	260	156	234,026	24,807	-24,651
Ermera	4,535	2,721	117,064	12,409	-9,688
Lautem	6,61	3,966	59,787	6,337	-2,371
Liquisa	501	301	63,403	6,721	-6,42
Manatuto	12,169	7,301	42,742	4,531	2,771
Manufahi	2,613	1,568	48,628	5,155	-3,587
Oecusse	6,19	3,714	64,025	6,787	-3,073
Viqueque	16,9	10,14	70,036	7,424	2,716
Total	123,295	73,977.6	1,066,409	113,039	-39,062

The government of Timor-Leste have several safety nets and humanitarian support programs. The Ministry of Social and Solidarity (MSS) and the Ministry for Commerce, Industry and Environment (MCIE) are distributing rice to the most vulnerable families and individuals nationwide. The government also regularly entered subsidized price rice at the

national and local markets. Other than this, food for work is also used to respond to food shortages. From January to September, a total of 12,398 tonnes of subsidized price rice entered the market and a total of 2,839 tonnes (59 tonnes from MCIE and 2,780 tonnes from MSS) of rice distributed to individuals, families and used for food for work.

⁴ Deficit to be covered by second season production, imports or other crops/food.

Table 4: Potential Maize surplus and deficits, per District

District	Potential Area (Ha)	Cultivated Area (ha)	Harvested Area (ha)	Productivity (ton/ha)	Total Production (ton)	Total Population as of 2010 census	Total Maize Requirement
Aileu	13	2,309.0	2,300.0	2.3	5,290.00	44,325	2,97
Ainaro	9	4,058.0	4,058.0	2	8,116.00	59,175	3,965
Baucau	16	2,482.7	2,482.7	2.5	6,206.63	111,694	7,483
Bobonaro	25,477	2,549.0	2,549.0	1.8	4,588.20	92,049	6,167
Covalima	56,113	3,500.0	3,276.0	1.5	4,914.00	59,455	3,983
Dili	3200	2,061.0	2,052.0	1	2,052.00	234,026	15,68
Ermera	5	596.0	596.0	1.2	715.20	117,064	7,843
Lautem	20	4,163.0	4,163.0	2.6	10,823.80	59,787	4,006
Liquica	5	2,495.7	2,495.7	2.6	6,488.85	63,403	4,248
Manatuto	19,896	1,050.7	1,050.7	2.3	2,416.61	42,742	2,864
Manufahi	10	621.0	621.0	2.2	1,366.20	48,628	3,258
Oecusse	19,435	7,746.0	7,746.0	2.5	19,365.00	64,025	4,29
Viqueque	12,5	3,440.0	3,440.0	2.1	7,224.00	70,036	4,692
Total	214,621	37,072.1	36,830.1	2.2*	79,566.48	1,066,409	71,449.40

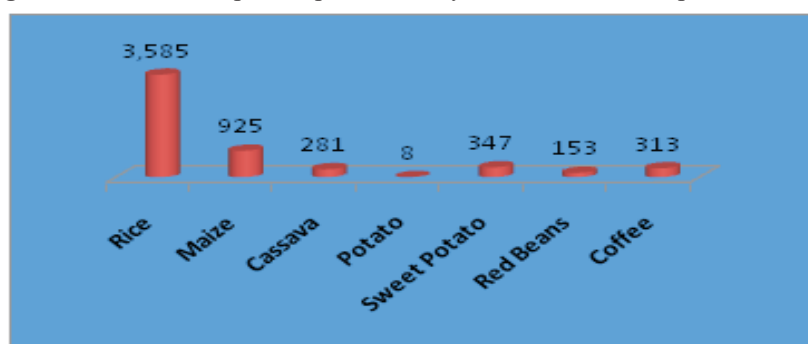
Source: National Directorate for Agriculture and Horticulture

*Average productivity

This quarter, a total of 3,223 hectares were completely destroyed by pests such as rat, locust and mealy bug that caused considerable damage to crops (Figure 14). The districts that mostly affected were Ainaro, Bobonaro, Manatuto and Oecusse. Considering these destruction and production

deficits, therefore Ainaro, Manatuto and Oecusse districts are the most vulnerable to food insecurity. Close monitoring on food stocks, household food availability and access of food from the market is necessary and is supposed to include not only the staple food (rice and maize) but also other food such as cassava, sweet potato, other root crops and vegetables.

Figure 14: Total Areas per Crops affected by Hazards, Pests and plant Diseases



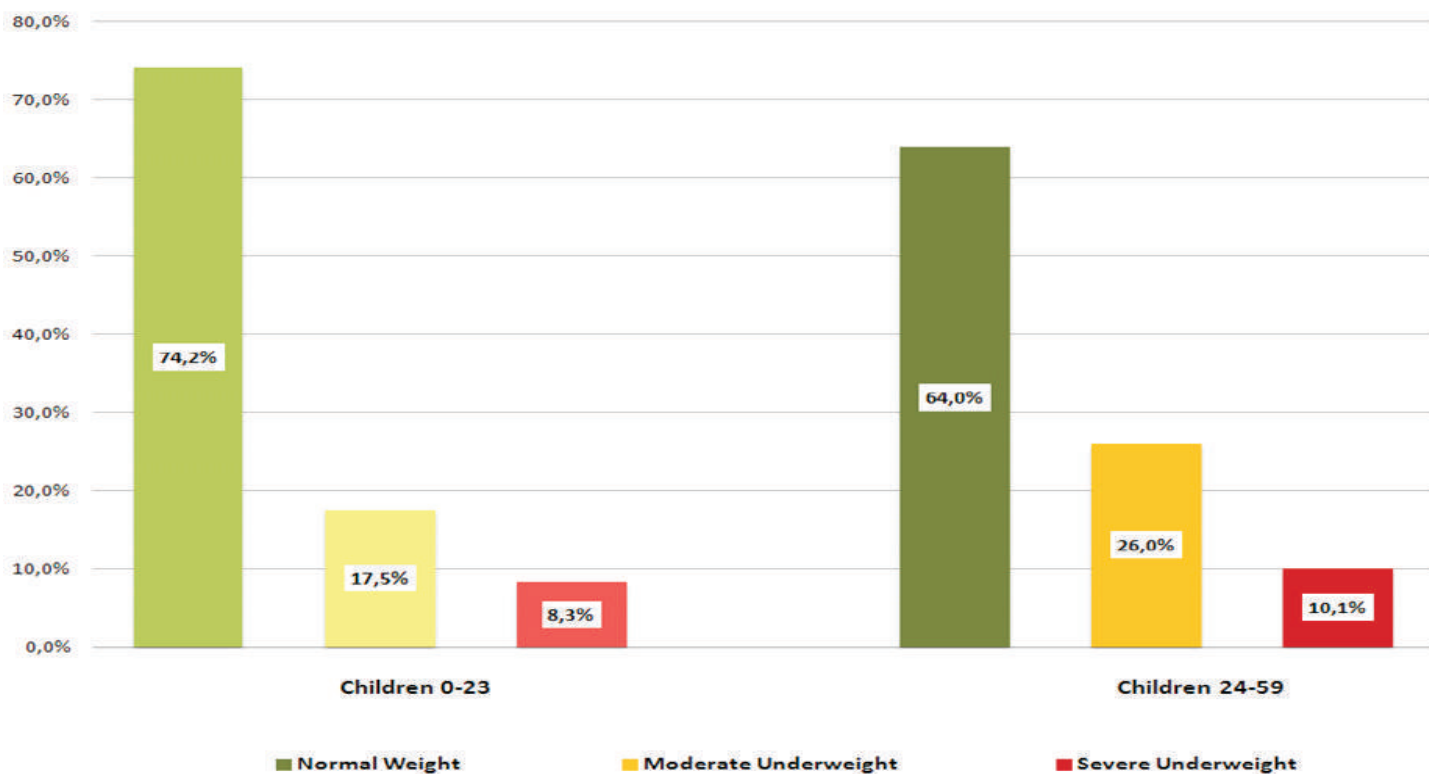
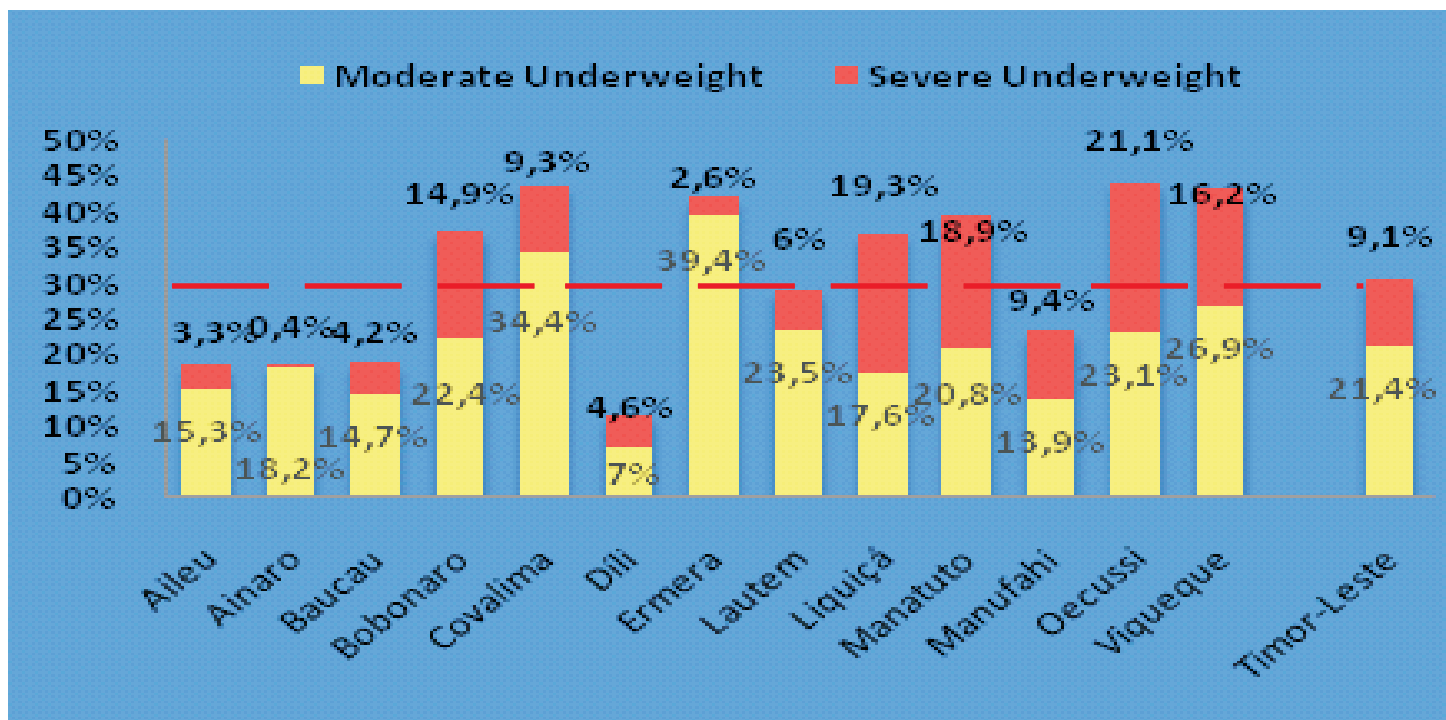
Nutrition and health

The prevalence of underweight (children with low weight for their age) during the second quarter of 2012 is 30.5%, which is less than what was reported in the first quarter (34.2%). Both the percentage of children under 5 years old with moderate and severe underweight are reflecting a trend towards the improvement of the nutritional status since quarter 1, from 23.7% to 21.4% and from 10.5% to 9.1% respectively.

From quarter 1 to quarter 2 of 2012, the general trend was towards a decrease in underweight in most districts. In District Covalima there was a small increase on the moderate underweight which can be justified by a decrease on severe underweight, although in Oecusse district severe underweight increased by 2.5%. Liquiça still remains as the district with a higher percentage of severely underweight compared to moderate underweight (Figure 15). Liquiça is also one of the districts with the highest rice production deficit but with some maize surplus.

⁵Based on a percapita consumption requirement per year of 67 kg/person

Figure 16: Children Weight Status, by age group



Children under two years old have better nutritional status compared to children from two to five years old (Figure 16). This can be associated to a higher attendance of children under two years old seeking health services compared to children from 2 to 5 years old. Most mothers or families are focus mostly in seeking health services for children under 2 years old

knowing that babies are susceptible to diseases and more vulnerable compared to children age from 2 to 5 years old. Older children are less likely to be taken regularly to the health facilities for check up unless they are sick. The blanket supplementary feeding for children under 2 years old may contribute to the higher level of attendance and thus resulted to better nutritional status of these children.